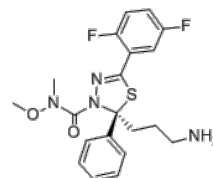


Product Name : Filanesib
Cat. No. : PC-73188
CAS No. : 885060-09-3
Molecular Formula : C₂₀H₂₂F₂N₄O₂S
Molecular Weight : 420.48
Target : Kinesin
Solubility : 10 mM in DMSO



Biological Activity

Filanesib (ARRY-520) is a potent, selective and noncompetitive kinesin spindle protein (KSP) inhibitor with IC₅₀ of 6 nM. Filanesib (ARRY-520) induces mitotic arrest in multiple cell lines.

Filanesib (ARRY-520) exhibits anti-proliferative against a broad range of human and rodent tumor cell lines, including a variety of leukemias and solid tumors, with EC₅₀ of 0.4-14.4 nM.

Filanesib (ARRY-520) causes accumulation of cells in the G2/M phase of the cell cycle in a dose-dependent manner in HeLa cells, induces caspase-2 activation.

Filanesib (ARRY-520) demonstrates anti-tumor activity in vivo.

References

Christine Lemieux, et al. AACR Annual Meeting. 2007.

Woessner R, et al. Anticancer Res. 2009 Nov;29(11):4373-80.

Carter BZ, et al. Leukemia. 2009 Oct;23(10):1755-62.

Caution: Product has not been fully validated for medical applications. Lab Use Only!

E-mail: tech@probechem.com